

Specialists in RF techniques

## RR1008 Series of Low Capacity RF Matrices

### Features:

The RR1008 is an Antenna Switching Matrix for professional communication systems with facility to switch off-air signals to any one of up to eight receivers from any one of up to four antennas, at a cost much lower than normally associated with such products. The equipment is designed as a low noise front-end with high spurious free RF dynamic range, as well as providing the switching facility. The unit is also provided with a high level of protection from signal overload and electrostatic discharge.

The inputs are frequency band limited to either HF frequencies 1 to 32MHz or VLF/MF frequencies 10kHz to 1.5MHz.

The unit is designed as a 19" rack-mounting frame and is equipped with a remote control facility in RS232 format. The equipment features BITE on the RF circuitry and an alarm output via the remote control interface.

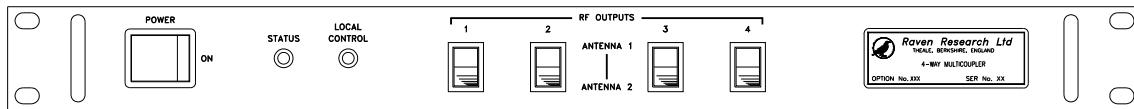
### Specification:

Standard Frequency Range	-HF	:	1.0 to 32MHz
	-VLF/MF	:	10kHz to 1.5MHz
Insertion Gain		:	0.5+/-1dB
Noise Figure HF	-1.0 to 32MHz	:	7dB maximum
Number of Inputs		:	Up to 4
Number of Outputs		:	Up to 8
Output Intercept Point	- 2nd Order	:	80dBm minimum
	- 3rd Order	:	40dBm minimum
Output Power for Rated IP's		:	0dBm
Characteristic Impedance		:	50Ω nominal
VSWR	- Input/Output	:	1.7: 1 maximum
Isolation	- Input to Input	:	60dB minimum
	- Input to Output	:	60dB minimum
	- Output to Input	:	32dB minimum
	- Output to Output	:	30dB minimum
Maximum Input Signal	- CW	:	30dBm
	- Pulse	:	2kV, 1.6μs rise-time, 50μs duration
Power Supply	- AC input	:	100-230V @ 50-60Hz
Power Consumption		:	60W maximum
Connectors	- RF Input	:	N-type or BNC socket
	- RF Output	:	BNC socket
	- Power AC	:	IEC Plug
	- Control	:	9-way D-type socket
Remote Control		:	RS232 or Ethernet
Controls	- On/Off Switch	:	Rocker switch
Indicators	- Status	:	LED
Dimensions	- Width, Depth, Height	:	483mm (19"), 400mm, 44mm (1U)
Temperature	- Operating	:	-10°C to +55°C

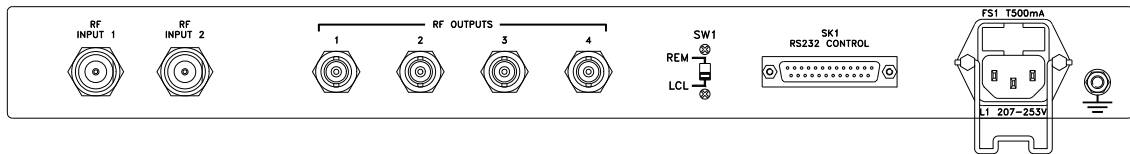
**NOTE:** Controlled changes to Specification Sheets may be made without notice to specification holders. Prior to use, contact company regarding specification status of the item described herein.

Specialists in RF techniques

Mechanical:



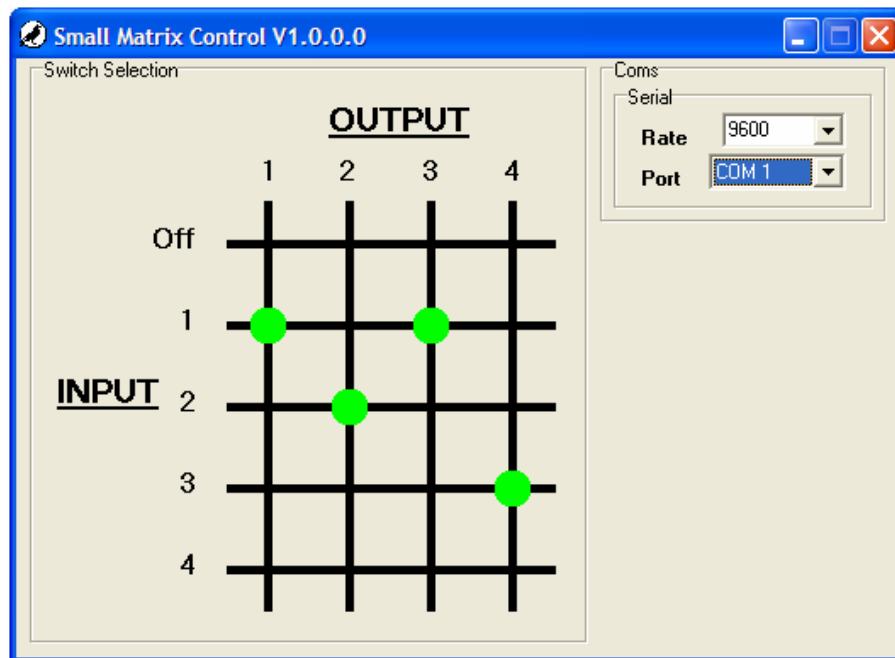
**FRONT VIEW**



**REAR VIEW**

**Diagram shows a RR1008-0204 2 input x 4 output switching matrix**

PC Based Remote Control User Interface:



**Screen Shot of the PC Control Application**

**NOTE:** Controlled changes to Specification Sheets may be made without notice to specification holders. Prior to use, contact company regarding specification status of the item described herein.



Product Ordering Information:

Example:

RR1008-04 04

Product Range:	
Components	100-999
Matrices	1000-1099
Multicouplers	1100-1399
Switching Units	1400-1499
Control Units	1500-1699
Devices/Amplifiers	1700-1799
Ancillaries	1800-1899

Number of Outputs:	
02	
03	
04	
05	
06	
07	
08	

Number of Inputs:	
02	
03	
04	

Additional Options Available Including:

- RF Input/Output Connector Types
- RF Input Frequency Ranges (HF or VLF/MF)
- Graphical Display showing the matrix connectivity status
- AC/DC Power
- Input/Output Frequency Range
- Windows based software control application
- Control via Ethernet

---

**NOTE:** Controlled changes to Specification Sheets may be made without notice to specification holders. Prior to use, contact company regarding specification status of the item described herein.